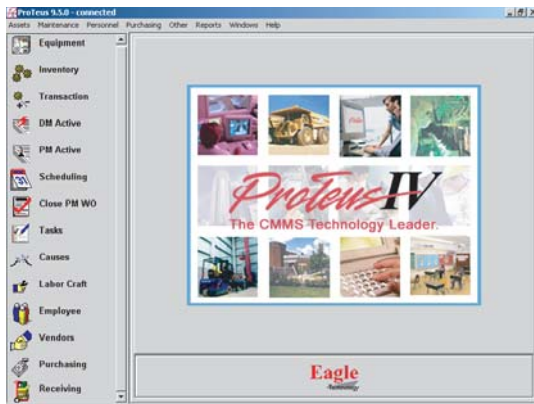


# ProTeus IV

The CMMS Technology Leader

## An Innovation in Maintenance Management

ProTeus IV is Eagle Technology's most innovative and flexible CMMS software to-date. This newest generation of CMMS software incorporates many features requested by our customers to streamline maintenance operations and improve their bottom line.



**ProTeus IV provides the most advanced and dynamic Work Order system available!**

With the new Master Scheduler, featuring Multi-Cycle Scheduling, the ultimate in asset management has been achieved. A single master plan can now be created for each individual asset, to include associated tasks at all desired

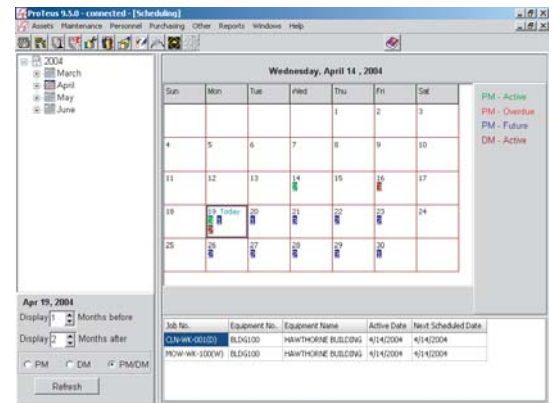
intervals, including runtimes. Only the tasks applicable to the specific cycle will appear when the work order becomes active. Virtually any activation interval can be scheduled.

### Master Scheduler

The Master Scheduler provides a comprehensive display of your entire work order plan and permits drill-down of detailed information such as allocated resources. Changes made within the Master Scheduler will be reflected on all relevant work orders.

### ProTeus Alarm Interface

The optional ProTeus Alarm Interface facilitates instantaneous activation of work orders from popular Building Automation Systems. Activation is based on real time control parameters such as alarms, alerts and equipment runtimes, and offers automatic printing or emailing of the work order upon activation. This unique interface is the only such interface available.

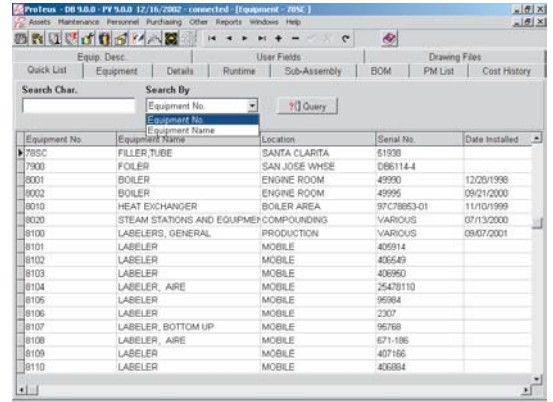


**Over 18 years of Service Excellence!**

# FEATURES & BENEFITS

Some of the major benefits ProTeus IV users enjoy are:

- **Quick Lists** feature customizable column arrangement and width settings, which are retained for each user
- **Time Card** facilitates rapid entry of labor hours for all work orders
- **Budget Module** allows tracking of material and labor costs against monthly and/or yearly budgets
- **Multi-site** facilitates company-wide access to any ProTeus database in the company's network
- **Crystal Reports™** third-party add-in lets users customize ProTeus reports



Equipment No.	Equipment Name	Location	Serial No.	Date Installed
705C	FILLER TUBE	SANTA CLARITA	51930	
7900	FOILER	SAN JOSE WHSE	066114.4	
8001	BOILER	ENGINE ROOM	49900	12/28/1998
8002	BOILER	ENGINE ROOM	49995	09/21/2000
8010	HEAT EXCHANGER	BOILER AREA	97C78653-01	11/10/1999
8020	STEAM STATIONS AND EQUIPME	COMPOUNDINGS	VARIOUS	07/13/2000
8100	LABELER, GENERAL	PRODUCTION	VARIOUS	09/07/2001
8101	LABELER	MOBILE	405914	
8102	LABELER	MOBILE	406549	
8103	LABELER	MOBILE	406950	
8104	LABELER, AIRE	MOBILE	25478110	
8105	LABELER	MOBILE	95984	
8106	LABELER	MOBILE	2207	
8107	LABELER, BOTTOM UP	MOBILE	96768	
8108	LABELER, AIRE	MOBILE	671-186	
8109	LABELER	MOBILE	407186	
8110	LABELER	MOBILE	406884	

## OPTIONAL MODULES

**Alarm Interface** — to popular Building Automation Systems

**Barcode** — barcode and track your assets, employees, and work orders

**Mobile Interface** — receive work orders on Palm-OS handhelds

**Audit Trail** — to track changes made to work orders

**ERP Interface** — for data exchange

**Microsoft Project™**

**interface** — transfers Project information to ProTeus

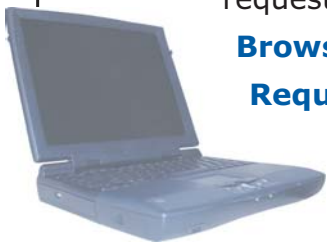
**Service Request** — to submit work requests from any computer

**Browser-based Service**

**Request** — lets users send a request for service from anywhere, via web browser

**PDF Documentation** — to attach and view PDF files from within ProTeus

**Web-Enablement** — to access ProTeus from remote locations



- **Emailable Work Orders** to employees anywhere in the world

- The **Status Report** allows users to view critical information on the ProTeus IV start-up screen

- **Certification Support** to facilitate compliance with certification authorities such as ISO, FDA, OSHA and JCAHO

- **Global Support Capabilities** allows each facility to view and edit data using its own currency and language to support global operations

## CONTINUOUS IMPROVEMENT

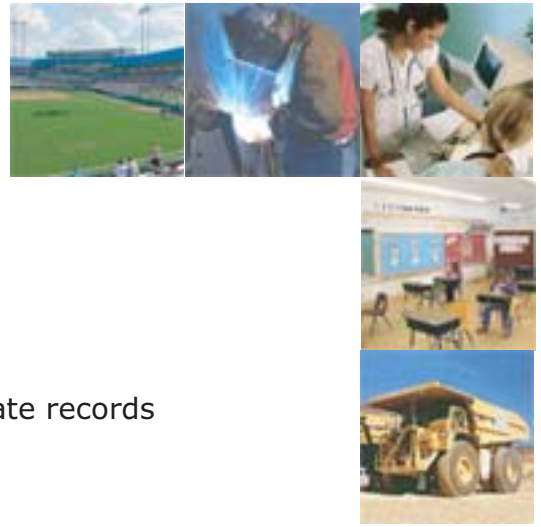
At Eagle Technology, we strive to continually improve our CMMS software to meet the ever-changing demands of our customers. We not only keep up with technology and business trends, we stay one step ahead.



# DATABASE TECHNOLOGY

In lieu of Microsoft Access®, Eagle Technology only uses SQL Server databases for increased database integrity. **Database Integrity** ensures a robust and scalable database for enterprise-wide applications and ensures:

- Increased user security
- Data validation
- Scalability
- Increased speed
- Corrupt data prevention
- Decreased possibility of duplicate records



# CUSTOMER SATISFACTION

"Our downtimes, which were at 14-18% are now around 2% which is practically unheard of." - Norm McClaren, Preventive Maintenance Coordinator, Buckhorn Rubber Products



"I've seen a dramatic decrease in DMs in the past couple of years, and I directly attribute that to PMs being handled through Eagle's software." - Jeff Casalle, Engineering Specialist, Saratoga Hospital

"Thanks to Eagle Technology, we just don't put out fires, we go in with the PMs and try to identify possible problems." - Joseph F. Vartiak, Jr., Plant Engineer, Culligan International

"The interface is logical and not difficult to figure out." - Russ Bjornstad, PM Manager, Culver Military Academies

# CUSTOMER COMMITMENT

Eagle Technology is committed to providing our customers with a superior CMMS product, and expert support and services. We work collaboratively with our customers and encourage their input so that we may continue to offer innovative solutions.

We offer three levels of products from single user systems to full-scale enterprise applications to meet each customer's unique requirements.

- **ProTeus Expert** is a sophisticated maintenance management system for one to four users.
- **ProTeus Professional** adds enhanced scheduling visibility and additional reporting capabilities.
- **ProTeus Enterprise** offers multi-site capabilities, unlimited users and enterprise server databases (MS SQL Server or Oracle).



Fortune 500 companies to small businesses worldwide rely on Eagle for their maintenance management needs. Eagle's CMMS software is successfully installed in such facilities as: Healthcare, Education, FDA-regulated and Governmental, as well as in Discrete & Process Manufacturing plants.

Over 18 years of  
Service Excellence!



## EAGLE TECHNOLOGY, INC.

Founded in 1987, Eagle Technology was one of the first maintenance software companies and a front-runner in CMMS innovation since its inception. Today, Eagle has grown to be the technology leader in CMMS software solutions and a leading provider of SQL database CMMS installations for the past 7 years. We develop, market and support maintenance software used by a variety of facilities and manufacturing organizations to assist them in maintaining their buildings and equipment.

We focus on a simple, yet critical goal...providing our customers with the highest quality software and services in the industry. This is accomplished through technological leadership, personalized attention, value-added services, and partnerships with industry leaders.

### **Distributed By:**

S&J Enterprises, Inc.  
P.O. Box 227  
Le Claire, IA 52753 USA

Phone (563) 289-2900  
Fax (866) 215-8766  
E-mail: [sales@SJ-enterprises.com](mailto:sales@SJ-enterprises.com)  
Web: [www.sj-enterprises.com](http://www.sj-enterprises.com)

**Eagle**  
Technology

Eagle Technology has partners in Europe and around the world, including: Australia, Brazil, Chile, China, Hungary, India, Malaysia, Mexico, Philippines, South Africa and the United Kingdom. Contact us for a dealer near you, or visit our website at:

[www.sj-enterprises.com](http://www.sj-enterprises.com).